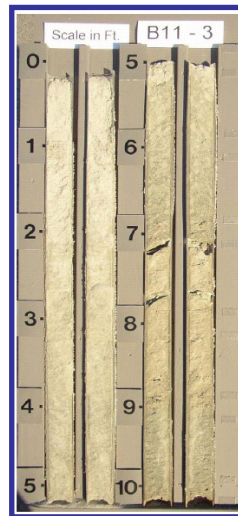
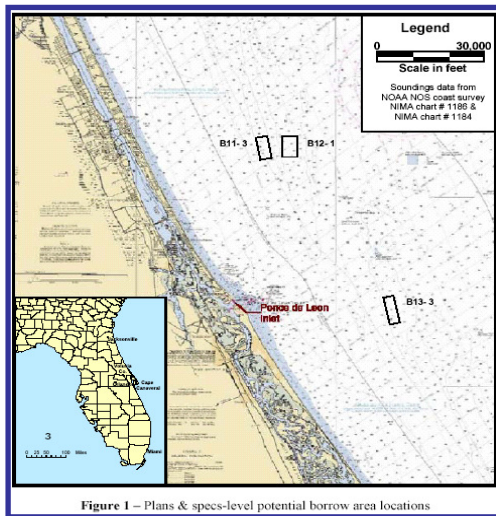


# VOLUSIA COUNTY OFFSHORE SAND SEARCH

Client: Volusia County, FL



## Key Elements

- Offshore Investigations
- Native Beach Characterization
- Laboratory Analyses
- ID Offshore Borrow Area for County-wide Beach Nourishment

**Date:** 2006

**Cost:** \$1,081,000

## Contact:

Joe Nolin, Port Director  
**Volusia County**  
700 Catalina Drive, Suite 126  
Daytona, FL  
(386) 248-8072  
[jnolin@co.volusia.fl.us](mailto:jnolin@co.volusia.fl.us)

The Ponce de Leon Inlet & Port District (District) is the "local sponsor" for the federal navigation project at Ponce de Leon Inlet. The District accepted an inlet-related beach erosion control responsibility as prescribed by the Inlet Management Plan for Ponce de Leon Inlet, which has been adopted and approved by the District and State of Florida Department of Environmental Protection (FDEP). To address the 18 miles of state designated critically eroded shoreline, the District initiated feasibility studies to provide for beach nourishment and dune construction projects for "critically eroded" Volusia County beaches fronting the Atlantic Ocean.

Coastal Tech performed a county-wide sand search to identify offshore borrow areas for initial restoration and future renourishment of Volusia County beaches. In concert with the sand search investigation, Coastal Tech collected over 130 vibracores (a mixture of 10 foot and 20 foot cores) over an area of 750 square miles, extending a maximum distance of about 15 miles offshore. The investigation located two distinct borrow areas reflecting the two types of native beach sediments that exist within the southern peninsula of Volusia.

Potential offshore borrow areas containing a total of 21.6 million cubic yards of sand were targeted by this *Scope of Work* to provide sufficient sand for initial restoration of north and south Peninsula beaches, to provide for future re-nourishment, in anticipation of the potential discovery of unsuitable sediments, to offset dredging losses, and to provide reserves. A *Reconnaissance Level Investigation* was proposed to identify sources for 21.6 million cubic yards of sand for nourishment of both of north and south Peninsula beaches. A *Plans & Specs Level Investigation* was proposed—solely for nourishment of south Peninsula beaches (10.8 mcy); it was anticipated that further investigation of sand sources may be undertaken in concert with a north Peninsula project developed in collaboration with the U.S. Army Corps of Engineers.



Enhancing Coastal Life.