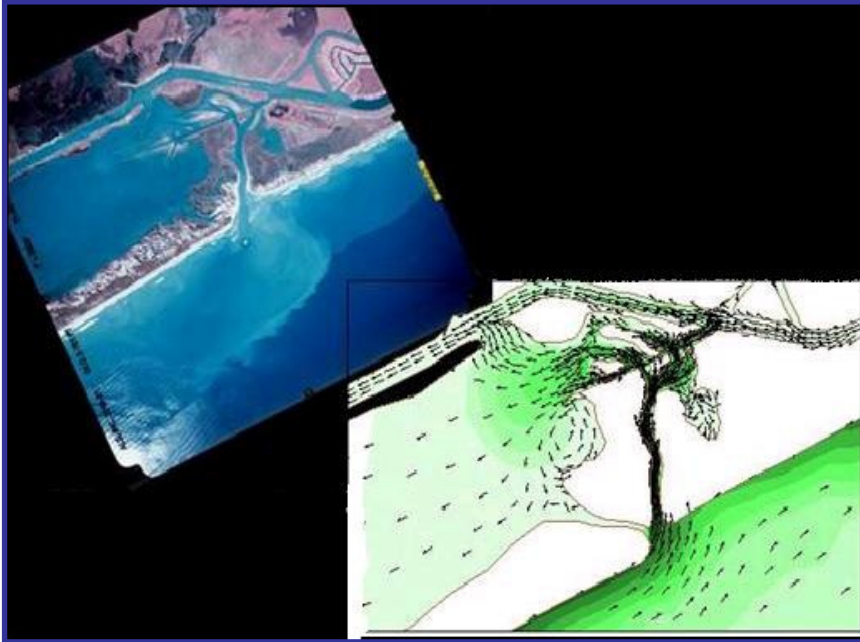


MITCHELL'S CUT INVESTIGATION AND MANAGEMENT PLAN

Client: Port of Bay City and Matagorda County, TX



Key Elements

- ④ Field Investigations
- ④ Public Forums
- ④ Hydrodynamic Modeling
- ④ Sediment Budget
- ④ Alternatives Assessment
- ④ Draft *Management Plan*
- ④ Funding Plan

Date: 2003

Fees: \$474,168

Contact:

Mike Griffith, Chairman
Port of Bay City Authority Board
2245 Avenue G
Bay City, TX
(979) 245-9236

Coastal Tech undertook a two-phase plan for the Port of Bay City Authority, Matagorda County, and Matagorda County Drainage District No. 1 to evaluate alternatives for the improvement of Mitchell's Cut (a man-made cut on the southeastern end of East Matagorda Bay) and formulate a long-term Inlet Management Plan. The current inlet had widened and an ebb shoal had developed creating dangerous navigation conditions. The local community had also expressed concerns about deterioration of water quality, high turbidity, increased flooding and potential significant erosion of the barrier islands on the perimeter of the bay.

In "Phase I - Baseline Field Investigation", Coastal Tech performed field studies and numerical modeling to develop an inlet management plan which would address navigational problems, shoreline erosion and drainage issues associated with Mitchell's Cut. The field study included a hydrographic survey, tide and current measurements and sediment sampling. The modeling work included developing a hydrodynamic model and a sediment transport model which was used to evaluate different management options for Mitchell's Cut



Enhancing Coastal Life.