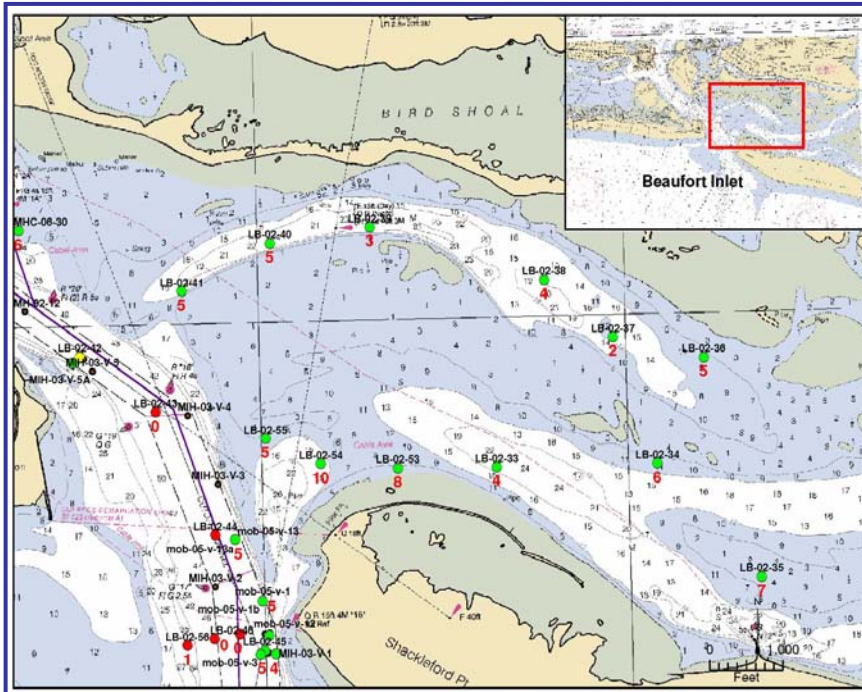


BOGUE BANKS MASTER BEACH NOURISHMENT PLAN & GEOTECHNICAL INVESTIGATIONS

Client: Moffatt & Nichol



Key Elements

- Data Collection & Review
- Historical Evaluation of Existing Conditions
- Pre-Application Conference

Date: 2009-2012

Cost: \$32,568.

Contact:

Johnny Martin, Assoc. Vice-President
Moffatt & Nichol
1616 East Millbrook Road, Suite 160
Raleigh, NC 27609
(919) 781-4626
jmartin@moffattnichol.com

Coastal Tech, under subcontract with Moffatt & Nichol has been selected to provide geotechnical services to evaluate and prioritize potential sand sources for nourishment of Carteret County beaches. Potential sand sources include: The current and former Morehead City Ocean Dredged Material Disposal Site, Morehead City Harbor maintenance dredging, Bogue Inlet channel and maintenance material, and other potential borrow areas in state water offshore of Emerald Isle. The work will supplement the USACE *Feasibility Study* to provide sand for beach nourishment for up to 50 years.

Also and as a subconsultant to Alpine Ocean Seismic Survey, Inc., we provided sediment analysis services for 600 samples from vibracores obtained offshore of Carteret County. This work is in support of the long term sediment needs of Carteret County. We subsequently worked with Moffatt & Nichol to delineate and recommend borrow areas to the County and presented findings to the Carteret County Beach Commission as well as regulatory staff.



Enhancing Coastal Life.